

Turning a Page

*A Capital Campaign
for the Schuylerville Public Library*



Our History:

The Schuylerville Public Library service district encompasses portions of seven towns and two villages, and represents an area rich in historical heritage, agriculture, industry, and strong community.

The facility at 52 Ferry Street was proposed in 1964, with construction completed in 1968. At 3,120 square feet for the 1,402 residents (1970 US Census), this spacious, welcoming space served as a center for literacy, education, culture, and community.



How We've Grown...

At 56 years young, the Schuylerville Public Library continues to serve as a steadfast beacon of our Turning Point community. In 2013 the library re-chartered to a School District Library. This decision to re-charter empowered taxpayers with new eligibility to serve in decision-making Board positions (taxation and representation has always run in our blood!), and officially expanded our service population to 10,032, an increase of 613%.

In 2016, the Schuylerville Public Library underwent an interior renovation. A 480 sq. ft. Reading Room was completed in 2019, providing our first private meeting space. In 2023, the Pavilion was completed for outdoor programs. **These projects were funded by State Grants and an endowment, NOT by community taxpayers.**

...And Our Tight-Knit Community Has Become Snug.

In 2023, the Schuylerville Public Library hosted (although crowded!) 37,892 visitors in a physically safe, intellectually inclusive, and welcoming environment. Patrons engaged their minds, borrowing 51,653 items and downloading 5,407 ebooks. Community bonds were forged at 650 programs. Reliable internet access (which we all know is spotty in our community) was provided to 5,937 Wi-Fi users, plus 2,348 computer users. Nutritious summer meals were provided to 318 children, and 1,043 people used the Farm-2-Library program. A discrete Little Food Pantry is available 24/7.

Last, but not least, the Schuylerville Public Library takes reservations (at no charge) from groups for meetings in the Reading Room, serving as Schuylerville's unofficial community center.

In 1968, the Schuylerville Public Library was proportioned to support 0.45 people per square foot. That same square footage now serves 2.77 people, a 517% increase in demand on the Library's physical facilities.

Our community's heritage hails from a long history of forward-minded innovators, who see beyond obstacles and seemingly insurmountable challenges to build a better possibility.

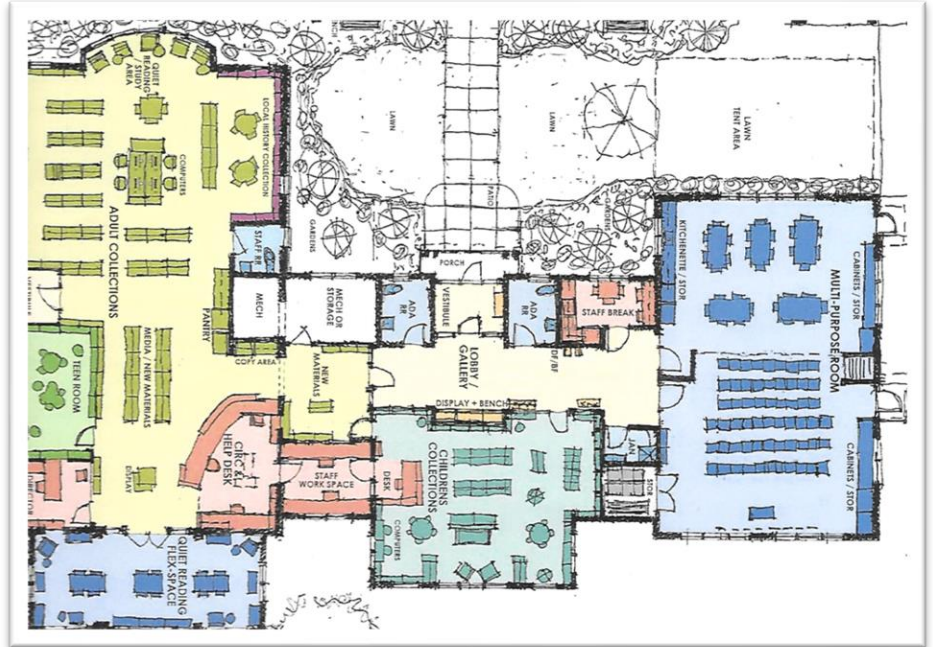
Together, we can provide the Schuylerville Public Library with a facility to match its spirit and indelible commitment to building and fostering our community.

*In the Turning a Page
Capital Campaign,
we honor the spirit of our
district's history
to embrace our future.*

A better-sized facility to support our community's needs

What Will a Larger Library Do?

- Provide a larger safe and inclusive space to support our district population's physical needs – warmth in the winter, cooling in the summer, and two clean, reliable public restrooms
 - Increase community access to *free* public meeting spaces, serving patrons from seniors to infants and all in-between
 - Provide a *free* multi-purpose room for performances and gatherings of up to 80 people
 - A room dedicated for children and one for teens, designating spaces appropriate for each group's developmental needs, (sometimes, their happy is loud!), while preserving spaces for patrons who desire a quieter experience
 - Gallery space for featuring local artists and encouraging budding artists
 - Reduce the current space deficit, from 2.77 people per square foot to 1.31 (still larger than 0.45 in 1968, but closer!), increasing square footage to 7,639
-



How Can You Help?

It will take an investment from our community to will this space into reality. At 56+ years since our last capital campaign, *nearly three generations* have grown, yet our facilities have remained the same. Board meetings are open to the public, and minutes are available online. Public input is welcome at any time. Financial and community support is needed to successfully pass a public vote **August 12, 2025** and raise our fundraising campaign goal of \$200,000.

Donate Treasure

The Advocates are fundraising! Consider buying a brick or making a gift.

Share Time

The Advocates can join your organization meetings for a 10-minute overview of the project to raise awareness.

Give Talent

Share your skill and help us reach our goals!

Visit bit.ly/turningapage for more information!

During the Last Capital Campaign, 56 Years Ago:

Cost of a new home: \$26,600

*Lyndon B. Johnson
was President*

First-class stamp: \$0.05

Gallon of regular gas: \$0.34

*The moon landing was
1 year away*

